



Product Description — *Water Crest* is an SFI product line produced from a hand-poured, cast method for vanity tops. It combines the cost effectiveness of normal polyester cast sinks with the durability of solid surface materials. The main body of the sink is a normal cast material. The colored, top layer is a hybrid polymer resin system, mixed with actual natural minerals such as marble and granite, and is chemically fused to the main body. This creates a veneer effect that has the durability of normal solid surface.

Water Crest tops feature a 1-1/8" thick deck, an integral backsplash (3-5/8" taller than the deck, 4" on a bevel top), integral bowl, speckled/granite-style top with a matte or gloss finish. Standard edge profile is slightly-eased, bevel and OG edge options also available. Standard depth is 22-3/8" and minimum depth is 17".

Performance — *Water Crest* offers all the performance benefits of solid surface material. *Water Crest* is resistant to scratches, heat, stains and mildew. Incidental damages such as small burns, scratches,



marring can be easily repaired. (See the Care & Cleaning and Repair & Maintenance instructions.)

Water Crest meets or exceeds the ANZI 124.3 standards as well as the applicable ANZI 124.6 standards.

Colors and Finishes — *Water Crest* is available in a full range of granite colors (see actual color samples) with a matte or gloss finish. All colors can be viewed on our web site at www.sinksbysfi.com, but please hold and look at an actual color sample prior to making your final color choice.

Limited Warranty — *Water Crest* is covered by a 5-year limited warranty. Refer to the *Water Crest Limited Warranty* sheet for complete details.



Product Description — *Roma* is an SFI product line produced from a hand-poured, cast method for vanity tops. It combines the cost effectiveness of normal polyester cast sinks with the durability of solid surface materials. The main body of the sink is a normal cast material. The colored, top layer is a hybrid polymer resin system, mixed with actual natural minerals such as marble and granite, and is fused to the main body. This creates a veneer effect that has the durability of normal solid surface.

Roma tops feature a 3/4" thick deck, integral backsplash (4" taller than the deck), integral bowl, speckled/granite-style top with a matte or gloss finish. Standard edge profile is slightly-eased. Standard depth is 22" and minimum depth is 17". Standard bowl (SFI's 105 Elegance) is a recessed oval, (see bowl specifications).

Performance — *Roma* offers all the performance benefits of solid surface material. *Roma* is resistant to heat, stains and mildew. Incidental



damage such as small burns, scratches, marring can be repaired. (See the Care & Cleaning and Repair & Maintenance instructions.)

Roma meets or exceeds ANZI 124.3 standards as well as the applicable ANZI 124.6 standards.

Colors and Finishes — *Roma* is available in a full range of colors

and is available in a matte or gloss finish. All colors can be viewed on our web site at www.sinksbysfi.com, please hold and look at an actual color sample prior to making your final color choice.

Limited Warranty — *Roma* is covered by a 5-year limited warranty. Refer to the separate Roma Limited Warranty sheet for complete detail



Product Description — The *Milan* line is a high quality, custom cultured marble product line. The main body of the sink is a normal cast material. A gel coat top layer is chemically fused to the main body of the cast material.

Milan 3/4" tops feature a 3/4" thick deck, integral backsplash (4" taller than the deck), and an integral bowl. Except for the Malibu bowls, all bowls are available in *Milan* 3/4" tops (see bowl specifications). Standard edge profile is slightly eased. Standard depth is 22" and minimum is 17

Milan 1-1/8" tops feature a 1-1/8" thick deck, integral backsplash (3-5/8" taller than the deck, 4" on a bevel top), and an integral bowl. All bowls are available in the *Milan* 1-1/8" tops (see bowl specifications). Standard edge profile is slightly eased; bevel and OG edges are available. Standard depth is 22-3/8" and minimum is 17".



Performance — *Milan* is resistant to heat, stains and mildew. Incidental damage such as scratches, marring, small stains can be repaired. (See Care and Cleaning and Repair and Maintenance instructions.) *Milan* meets the ANZI 124.3 standards.

Color and Finishes — *Milan* offers veined/swirled colors on a back ground of speckled, granite particles

in a matte or gloss finish. All colors can be viewed on our web site www.sinksbysfi.com, but hold and look at an actual color sample before making your final color choice.

Limited Warranty — *Milan* is covered by a one-year limited warranty. Refer to the *Milan Limited Warranty* sheet for complete details.



corners, bump-outs, banjo tops, drop-in or under-mount bowls, and loose or no backsplash options

SFI, Inc. Creates custom and modular vanity tops. Each of these product lines offer many different style and color options.

These product lines also offer a choice of length and depth of tops, multiple and two-tone bowl styles, placement and custom edges.

Variations made to vanity tops can also include: angles, clipped or radius

P.O. Box 378, 3125 Riley Road, Sparta, WI 54656
608-269-2706 • 888-664-7465 • Fax 608-366-1934
www.sinksbysfi.com

Scott Pirnstill, VP of Sales and Marketing
Cell 608-304-0371, spirnstill@sinksbysfi.com

Julie Baginski, VP of Operations
Ext. 302 — jbaginski@sinksbysfi.com

Zander Lince, Customer Service
Ext. 301 — csr@sinksbysfi.com

Send Orders to orders@sinksbysfi.com

Monday – Thursday (CST) 8 a.m.–4:30 p.m.,
Friday (CST) 8 a.m.–noon



Product Description — The *Florence* line is a high quality, custom cultured marble product line. The main body of the sink is a normal casting material. A gel coat top layer is chemically fused to the main body of the cast material.

Florence tops feature a 1-1/8" thick deck, an integral backsplash (3-5/8" taller than the deck, 4" on a bevel top), and integral bowl. Standard bowl (SFI's 101 Malibu) is a partially- recessed, deep oval (see bowl specifications). Standard edge profile is slightly-eased, bevel and OG edge options available. Standard depth is 22-3/8" and minimum depth is 17". Each color is custom poured and produces a marble-style look, available in a matte or gloss finish.



Performance — *Florence* meets the ANZI 124.3 standards.

Colors and Finishes — *Florence* is available in a full range of colors and is available in a matte or gloss finish. All colors can be viewed on our web site at www.sinksbysfi.com, but please hold and look at an actual color sample before making your final color choice.

Limited Warranty — *Florence* is covered by a 1-year limited warranty. Refer to the separate *Florence Limited Warranty* for complete details.



Product Description — The *Venetian* line is a high quality, custom cultured marble product line. The main body of the sink is a normal casting material. A gel coat top layer is chemically fused to the main body of the cast material.

Venetian tops feature a 3/4" thick deck, integral backsplash (4" taller than the deck), and integral bowl. Standard bowl (SFI's 105 Elegance) is a recessed oval (see bowl specifications). Standard edge is slightly-eased. Standard depth is 22" and minimum depth is 17". Each color is custom poured and produces a marble-style look, available in a matte or gloss finish.

Performance — *Venetian* is resistant to heat, stains and mildew. Incidental damage such as scratches, marring, small stains can be



repaired. (See Care & Cleaning and Repair & Maintenance instructions.) *Venetian* meets ANZI 124.3 standards.

Colors and Finishes — *Venetian* is available in a full range of colors and is available in a matte or gloss finish. All colors can be viewed on our web site www.sinksbysfi.com, but please hold and look at an actual color sample before making your final color choice.

Limited Warranty — *Venetian* is covered by a one-year limited warranty. Refer to the separate Venetian Limited Warranty sheet for complete details.

Cultured Marble Product Line Extension — Elevate every corner of your bathroom with our full line of cultured marble products. Beyond stunning countertops, we offer window sills, shower bases, shower walls, and a variety of shower accessories — all crafted with the durability, elegance, and low-maintenance appeal you've come to expect. Whether you're designing a sleek modern retreat or a timeless classic space, our cultured marble solutions bring beauty and function together seamlessly. Ask about customizing your project with these complementary products today.

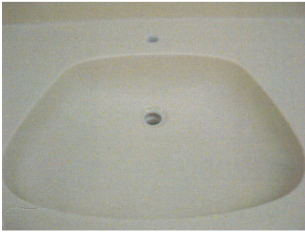
Cultured Marble Vanity Tops Made in the USA



Water Crest
1280 Tapioca
103 Newport



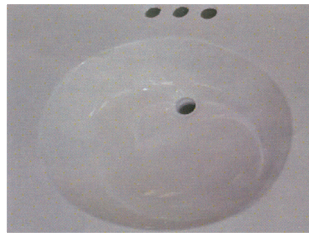
101/102 - Malibu Bowl



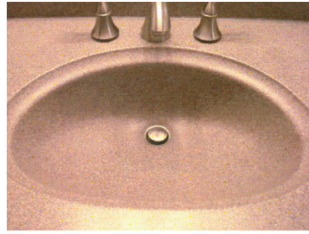
108 - Access Bowl



115 - Bar Bowl



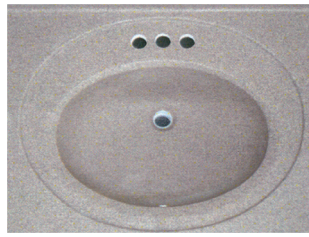
103 - Newport Bowl
104 - Catalina Bowl
114 - Redondo Bowl



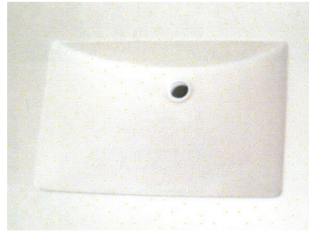
109 - Canadian Bowl



116 - Royal



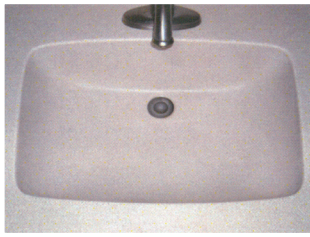
105/106 - Elegance Bowl



110/111 - Wave Bowl



117 - Newport Fair



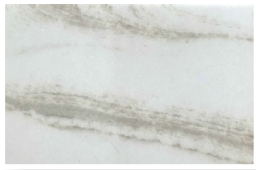
107/107m/107s - Futura Bowl



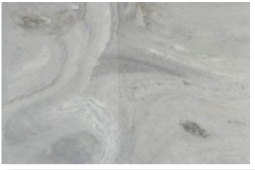
113 - Celebrity Bowl



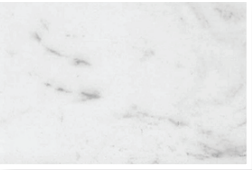
118 - Contour



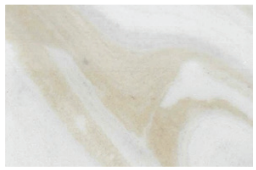
1016 Frappe
Florence/Venetian



1018 Krypton
Florence/Venetian



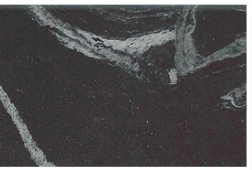
1020 Black on White
Florence/Venetian



1023 Silver Sand
Florence/Venetian



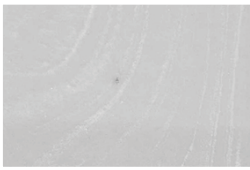
1024 Taupe on White
Florence/Venetian



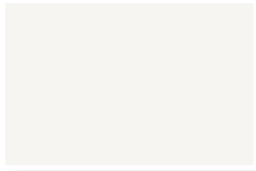
1025 White on Black
Florence/Venetian



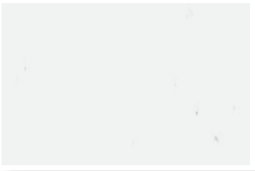
1026 White on Sandbar
Florence/Venetian



1027 White on Silver
Florence/Venetian



1101 Snow
Florence/Venetian



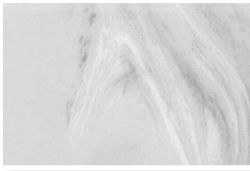
1104 Biscuit-bowl only



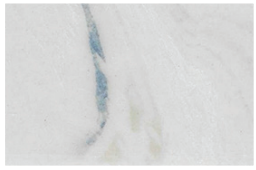
202 Silver Shore
Florence/Venetian



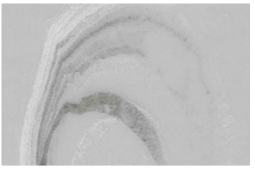
204 Sandy Shore
Florence/Venetian



205 Midnight Shore
Florence/Venetian



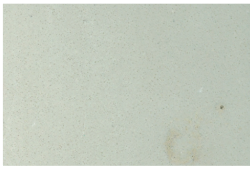
207 Lake Shore
Florence/Venetian



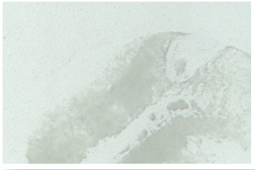
209 West Shore
Florence/Venetian



1001 White / White
Florence/Venetian



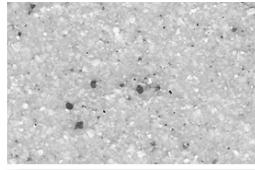
1009 Linen
Florence/Venetian



1011 Glacier
Florence/Venetian



1013 Sand Dollar
Florence/Venetian



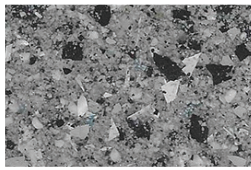
1201 Ash
Water Crest/Roma



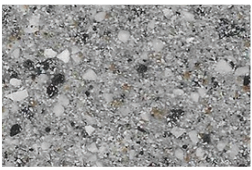
1219 Snow Cloud
Water Crest/Roma



1262 Alpine
Water Crest/Roma



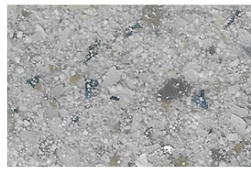
1265 Heather
Water Crest/Roma



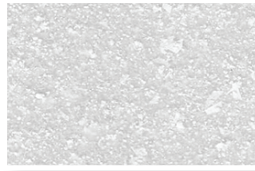
1266 Slate
Water Crest/Roma



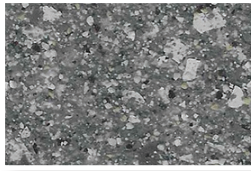
1267 Frost
Water Crest/Roma



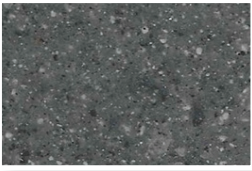
1268 Empire
Water Crest/Roma



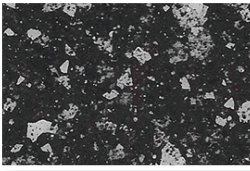
1270 Everest
Water Crest/Roma



1271 Graphite
Water Crest/Roma



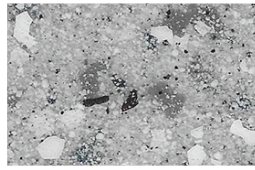
1272 Meteor Gray
Water Crest/Roma



1273 Milky Way
Water Crest/Roma



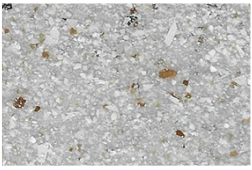
1274 Mocha
Water Crest/Roma



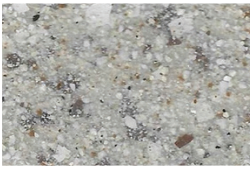
1275 Moonscape
Water Crest/Rom



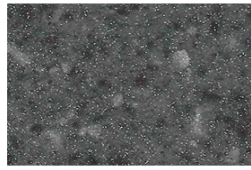
1276 Quarry
Water Crest/Roma



1277 Riverstone
Water Crest/Roma



1278 Rocky Trail
Water Crest/Roma



1279 Silverado
Water Crest/Roma



1280 Tapioca
Water Crest/Roma



1281 Tweed
Water Crest/Roma

Colors not in standard sets can be seen on website, www.sinksbysfi.com

All colors available in matte or gloss, hold actual sample prior to ordering.

WaterCrest

Roma

Milan

Florence

Venetian