



**Product Description** — Water Crest is an SFI product line produced from a hand-poured, cast method for vanity tops. It combines the cost effectiveness of normal polyester cast sinks with the durability of solid surface materials. The main body of the sink is a normal cast material. The colored, top layer is a hybrid polymer resin system, mixed with actual natural minerals such as marble and granite, and is chemically fused to the main body. This creates a veneer effect that has the durability of normal solid surface.

Water Crest tops feature a 1-1/8” thick deck, an integral back-splash (3-5/8” taller than the deck, 4” on a bevel top), integral bowl, speckled/granite-style top with a matte or gloss finish. Standard edge profile is slightly-eased, bevel and OG edge options also available. Standard depth is 22-¼” and minimum depth is 18-½”. Standard bowl (SFI’s 101 Malibu) is a partially-recessed, deep oval (see bowl specifications).



(See the Care & Cleaning and Repair & Maintenance instructions.)

Water Crest meets or exceeds the ANZI 124.3 standards as well as the applicable ANZI 124.6 standards.

**Colors and Finishes** — Water Crest is available in a full range of granite colors (see actual color samples) with a matte or gloss finish. All colors can be viewed on our web site at [www.sinksbysfi.com](http://www.sinksbysfi.com), but please hold and look at an actual color sample prior to making your final color choice.

**Limited Warranty** — Water Crest is covered by a 5-year limited warranty. Refer to the separate Water Crest Limited Warranty sheet for complete details.



**Product Description** — Roma is an SFI product line produced from a hand-poured, cast method for vanity tops. It combines the cost effectiveness of normal polyester cast sinks with the durability of solid surface materials. The main body of the sink is a normal cast material. The colored, top layer is a hybrid polymer resin system, mixed with actual natural minerals such as marble and granite, and is fused to the main body. This creates a veneer effect that has the durability of normal solid surface.

Roma tops feature a 3/4” thick deck, integral backsplash (4” taller than the deck), integral bowl, speckled/granite-style top with a matte or gloss finish. Standard edge profile is slightly-eased. Standard depth is 22” and minimum depth is 18-½”. Standard bowl (SFI’s 105 Elegance) is a recessed oval, (see bowl specifications).



Roma meets or exceeds the ANZI 124.3 standards as well as the applicable ANZI 124.6 standards.

**Colors and Finishes** — Roma is available in a full range of colors and is available in a matte or gloss finish. All colors can be viewed on our web site at [www.sinksbysfi.com](http://www.sinksbysfi.com), but please hold and look at an actual color sample prior to making your final color choice.

**Limited Warranty** — Roma is covered by a 5-year limited warranty. Refer to the separate Roma Limited Warranty sheet for complete details.

**Performance** — Water Crest offers all the performance benefits of solid surface material. Water Crest is resistant to scratches, heat, stains and mildew. Incidental damages such as small burns, scratches, marring, etc. can be easily repaired.



**Product Description** — The Venetian line is a high quality, custom cultured marble product line.

The main body of the sink is a normal casting material. A gel coat top layer is chemically fused to the main body of the cast material.

Venetian tops feature a 3/4” thick deck, integral backsplash (4” taller than the deck), and integral bowl. Standard bowl (SFI’s 105 Elegance) is a recessed oval (see bowl specifications). Standard edge is slightly- eased. Standard depth is 22” and minimum depth is 18-½”. Each color is custom poured and produces a marble-style look, available in a matte or gloss finish.

**Performance** — Venetian is resistant to heat, stains and mildew. Incidental damage such as scratches, marring, small stains, etc. can be repaired. (See Care & Cleaning and Repair & Maintenance instructions.) Venetian meets the ANZI 124.3 standards.



**Colors and Finishes** — Venetian is available in a full range of colors and is available in a matte or gloss finish. All colors can be viewed on our web site at [www.sinksbysfi.com](http://www.sinksbysfi.com), but please hold and look at an actual color sample before making your final color choice.

**Limited Warranty** — Venetian is covered by a 1-year limited warranty. Please refer to the separate Venetian Limited Warranty sheet for complete details.



**Product Description** — The Florence line is a high quality, custom cultured marble product line.

The main body of the sink is a normal casting material. A gel coat top layer is chemically fused to the main body of the cast material.

Florence tops feature a 1-1/8” thick deck, an integral back-splash (3-5/8” taller than the deck, 4” on a bevel top), and integral bowl. Standard bowl (SFI’s 101 Malibu) is a partially-recessed, deep oval (see bowl specifications). Standard edge profile is slightly-eased, bevel and OG edge options available. Standard depth is 22-¼” and minimum depth is 18-½”. Each color is custom poured and produces a marble-style look, available in a matte or gloss finish.



**Performance** — Florence meets the ANZI 124.3 standards.

**Colors and Finishes** — Florence is available in a full range of colors and is available in a matte or gloss finish. All colors can be viewed on our web site at [www.sinksbysfi.com](http://www.sinksbysfi.com), but please hold and look at an actual color sample before making your final color choice.

**Limited Warranty** — Florence is covered by a 1-year limited warranty. Refer to the separate Florence Limited Warranty sheet for complete details.



## Cultured Marble Vanity Tops Made in the USA



Roma  
1268 - Empire  
105 - Elegance Bowl





**Sfi, Inc.** creates custom and modular vanity tops. Each of these product lines offer many different style and color options. These product lines also offer a choice of length and depth of tops, multiple and two-tone bowl styles, placement and custom edges. Variations made to vanity tops can also include: angles, clipped or radius corners, bump-outs, banjo tops, drop-in or under-mount bowls, and loose or no backsplash options.

**Sfi, Inc.,** P.O. Box 378, 3125 Riley Road, Sparta, WI 54656  
Phone 608-269-2706 • 888-664-7465 • Fax 608-366-1934

**Scott Pirnstill, Sales Representative**  
Cell 608-304-0371, [spirnstill@sinksbysfi.com](mailto:spirnstill@sinksbysfi.com)

**Julie Baginski, Operations Manager**  
Ext. 302 — [jbaginski@sinksbysfi.com](mailto:jbaginski@sinksbysfi.com)

**Zander Lince, Customer Service**  
Ext. 301 — [csr@sinksbysfi.com](mailto:csr@sinksbysfi.com)

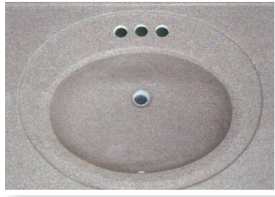
**Send Orders to** [orders@sinksbysfi.com](mailto:orders@sinksbysfi.com)

[www.sinksbysfi.com](http://www.sinksbysfi.com)

Mon.–Thurs. (CST) 8 a.m.–4:30 p.m., Fri. (CST) 8 a.m.–noon



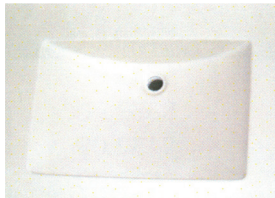
101/102 - Malibu Bowl



105/106 - Elegance Bowl



108 - Access Bowl



110/111 - Wave Bowl



115 - Bar Bowl



103 - Newport Bowl  
104 - Catalina Bowl  
114 - Redondo Bowl



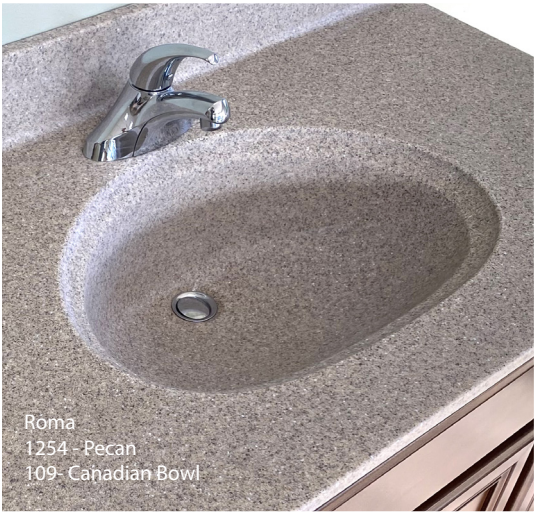
107/107m/107s - Futura Bowl



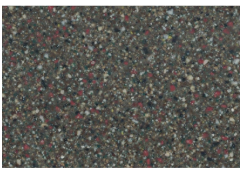
109 - Canadian Bowl



113 - Celebrity Bowl



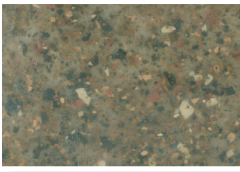
Roma  
1254 - Pecan  
109 - Canadian Bowl



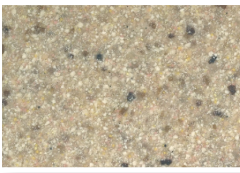
1241 - Canyon  
Water Crest/Roma



1211 - Desert  
Water Crest/Roma



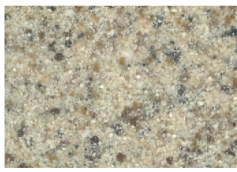
1260 - Hickory (LP)  
Water Crest/Roma



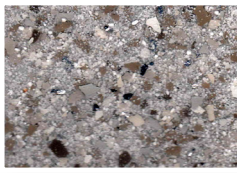
1253 - Outback  
Water Crest/Roma



1219 - Snow Cloud  
Water Crest/Roma



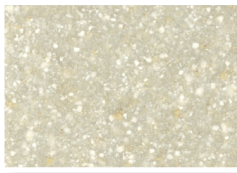
1250 - Cappuccino  
Water Crest/Roma



1268 - Empire  
Water Crest/Roma



1234 - Kodiak  
Water Crest/Roma



1256 - Oatmeal  
Water Crest/Roma



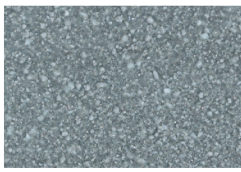
1257 - Stone Creek  
Water Crest/Roma



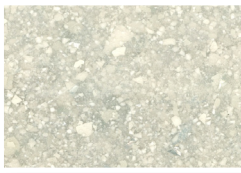
1240 - Aggregate  
Water Crest/Roma



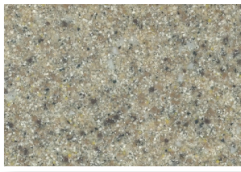
1203 - Beach  
Water Crest/Roma



1255 - City Gray  
Water Crest/Roma



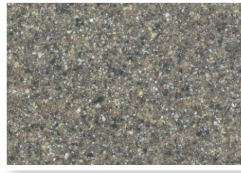
1267 - Frost  
Water Crest/Roma



1242 - Matterhorn  
Water Crest/Roma



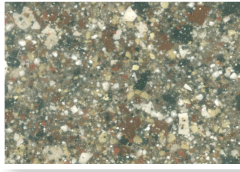
1243 - Pebble  
Water Crest/Roma



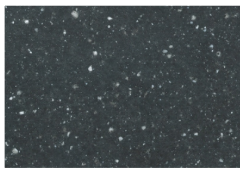
1244 - Walnut Toffee  
Water Crest/Roma



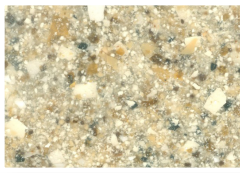
1262 - Alpine  
Water Crest/Roma



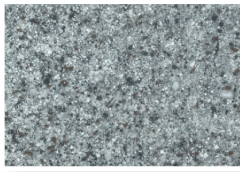
1261 - Boulder  
Water Crest/Roma



1208 - Coal  
Water Crest/Roma



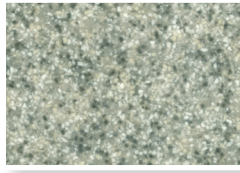
1263 - Harvest  
Water Crest/Roma



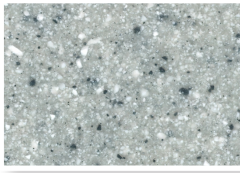
1252 - Mont Blanc  
Water Crest/Roma



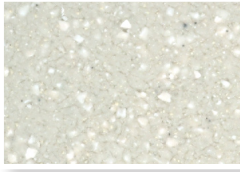
1254 - Pecan  
Water Crest/Roma



1220 - Whitney Gray  
Water Crest/Roma



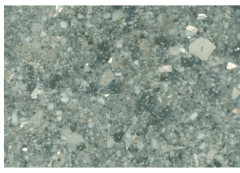
1201 - Ash  
Water Crest/Roma



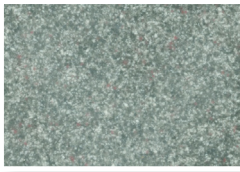
1207 - Bride  
Water Crest/Roma



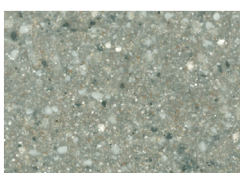
1210 - Cottontail  
Water Crest/Roma



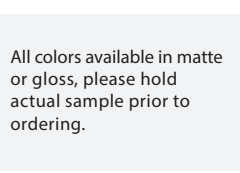
1265 - Heather  
Water Crest/Roma



1215 - Mousetail  
Water Crest/Roma



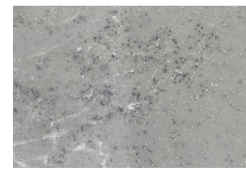
1266 - Slate  
Water Crest/Roma



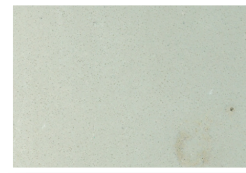
All colors available in matte or gloss, please hold actual sample prior to ordering.



Roma  
1268 - Empire  
103 - Newport Bowl, in Snow



1017 - Galaxy  
Florence/Venetian



1009 - Linen  
Florence/Venetian



1101 - Snow  
Florence/Venetian



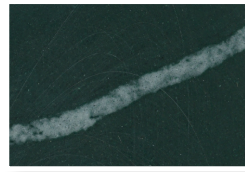
Venetian  
1018 - Krypton  
110/111 - Wave Bowl



1011 - Glacier  
Florence/Venetian



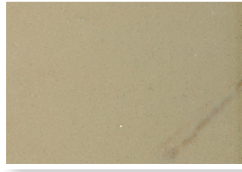
1003 - Lt. Taupe  
Florence/Venetian



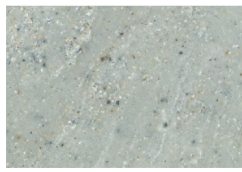
1006 - Timberline  
Florence/Venetian



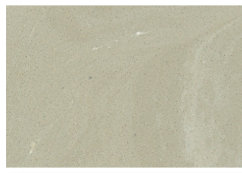
1008 - Alabaster  
Florence/Venetian



1007 - Coffee  
Florence/Venetian



1010 - Grecian  
Florence/Venetian



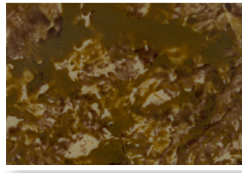
1004 - Parchment  
Florence/Venetian



1103 - Tusk\*  
Florence/Venetian



1316 - Sardinia  
Florence/Venetian



1315 - Veneto  
Florence/Venetian



1015 - Arctic Black  
Florence/Venetian



1102 - Cream\*  
Florence/Venetian



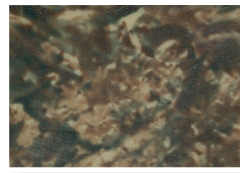
1005 - Ice Gray  
Florence/Venetian



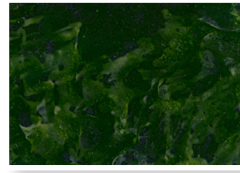
1009B - Pure Linen  
Florence/Venetian



1001 - White/White  
Florence/Venetian



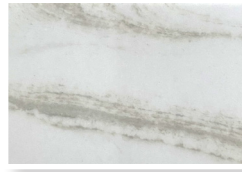
1311 - Savona  
Florence/Venetian



1312 - Verona  
Florence/Venetian



1014 - Black Stone  
Florence/Venetian



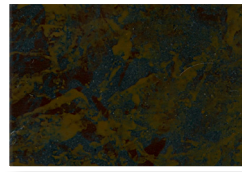
1016 - Frappe  
Florence/Venetian



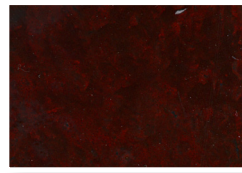
1018 - Krypton  
Florence/Venetian



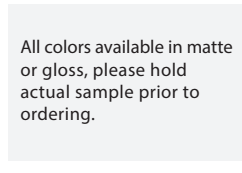
1013 - Sand Dollar  
Florence/Venetian



1314 - Etna  
Florence/Venetian



1313 - Umbria  
Florence/Venetian



All colors available in matte or gloss, please hold actual sample prior to ordering.